

## Ultra-compact Gigabit Media Converter

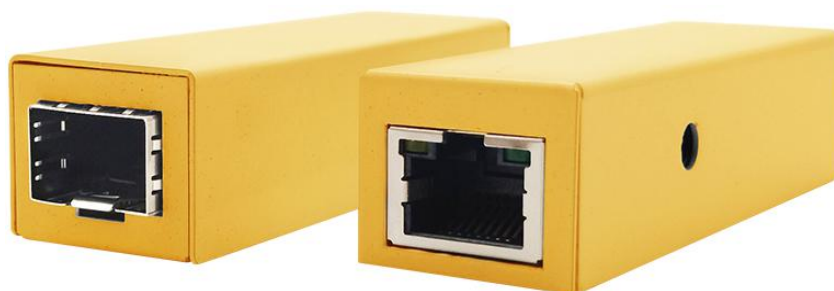
### LT-MC60G-M1

#### Overview:

The SmartByte LT-MC60G-M1 is the ultra-compact plug-and play 10/100/1000Base-T to 1000Base-X media converter which is designed for applications where compact size, light weight and low power are critical requirements. It can be easily installed in tight places or conveniently slip into any pocket or laptop carrying case for easy portability with its ultra-compact size (79\*23\*18mm) and super light weight (60 g)

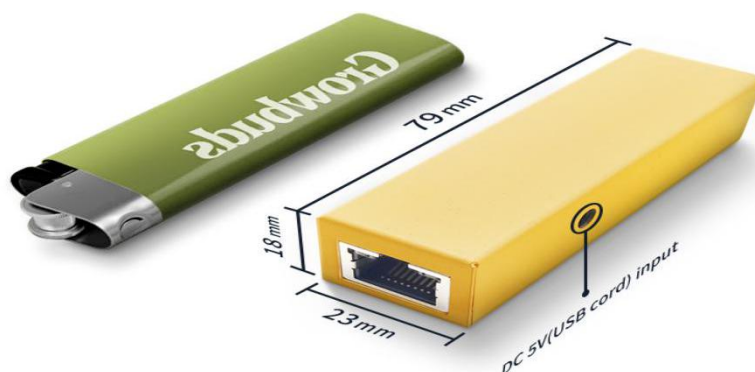
This ultra-compact media converter can be USB powered by USB 1.0 or 2.0 port, which is ideal for connections to fiber in areas where a spare power outlet may not be available. When plugged into a computer's USB port, the media converter shuts down automatically when you turn off the computer, which saves energy. So this Ultra-compact media converter is an ideal solution for fiber-to-the-laptop where it needs Gigabit connectivity but local power isn't available. For applications not utilizing USB power, this converter is also available with a 5V AC/DC power adapter, providing compatibility with electrical outlet types.

#### Picture



Front side

Back side



## Features

- Ultra-compact size (79\*23\*18mm) and super light weight (60 g)
- 10/100/1000Base-T to 1000Base-X
- SFP slot for flexible long distance transmission
- USB powered for easy portability or used with the included power adaptor
- Auto-negotiation
- Auto-MDI/MDIX
- Plug-and-Play
- Lower jitter
- Lower latency
  
- Ultra low power dissipation < 1.2W
- Support Jumbo frame 10Kbytes
- Support watchdog, automatically reboot if frozen
  
- Operation temperature: -20°C~70°C

## Technical specification

<b>Ports interface</b>	
Fixed port	1*1000 Base-X SFP, 1*10/100/1000 Base - T
Power interface	DC jack
<b>LED indicators</b>	
Green LED	link/act indicator
Yellow LED	1000M link indicator
<b>Cable type &amp; transmission distance</b>	
Twisted-pair	0-100m (CAT5e,CAT6)
SFP slot	Depending on the SFP module
<b>Electrical &amp; Layer 2 Specifications</b>	
Input voltage	DC 5 V
Total Power consumption	Full load≤1.2W
MDX/MIDX	Support

Jumbo Frame	Support 10Kbytes
Watchdog	Support
<b>Environment</b>	
Operating temperature	-20°C~70°C
Storage temperature	-40°C~85°C
Relative humidity	5%~95% (non-condensing)
Thermal methods	Fan-less, natural cooling
MTBF	100,000 hours
<b>Protection &amp; Certification</b>	
Surge protection of Ethernet port	IEC 61000-4-5 Level 3 (2KV) (10/700us)
ESD	IEC 61000-4-2 Level 4 (8K/15K)
Free fall	0.5m
Certification	CE/FCC/RoHS
<b>Mechanical Dimensions</b>	
Product size	79*23*18mm
Installation Method	desktop
Weight	57 g

## Order information

Model	Description
LT-MC60G-M1	Ultra-compact 10/100/1000Base-T to 1000Base-X media converter, 1*Gigabit SFP port + 1*10/100/1000M RJ45 port, without SFP module, DC 5V power supply